



Welcome

02/21/2021
11:00 AM WORSHIP

By the grace of Jesus Christ, we are called to worship God:
to connect in community, to nurture in love, and to serve in the world.

PALMS PRESBYTERIAN CHURCH
3410 S. THIRD STREET // JACKSONVILLE BEACH, FL 32250
PHONE: 904-246-6427 **WEB:** PALMSCHURCH.ORG
WIFI: PalmsGuest **Password:** oasiswifi

ANNOUNCEMENTS

FLOWERS

Please contact Sallie Gipson at sallie.gipson@palmschurch.org if you would like to give flowers in honor or in memory of someone.

CHURCH COMMUNICATIONS

If you would like to be added to our weekly email of church announcements, please email communications@palmschurch.org or call the church office.

OFFERING ENVELOPES

The new offering envelopes have been mailed out and you will receive them the week of February 22.

CONNECTION FORM

Let us know you are worshiping with us by completing the Connection Form located at <https://www.palmschurch.org/online-connection/>.

One Great HOUR OF SHARING

During Lent and on Easter morning, we participate in the One Great Hour of Sharing Offering of our denomination. You can find out more information about this interdenominational offering here:

<https://specialofferings.pcusa.org/offering/oghs/>

One way you and your family can participate is by adding money to Fish Banks. The Fish Banks will be in Patten Hall and in the church office if you would like to pick one up and add to it through the Lenten season. An alternative way to give is through the website by clicking on the Give Button and then selecting One Great Hour of Sharing from the dropdown menu.

A MESSAGE FROM THE BUSINESS OFFICE

Each month there will be a financial report of the pledges and general fund gifts received YTD and the YTD church budget (ministry plan) amount necessary to accomplish ministry. Financial supporters of Palms will know if actual gifts are ahead or falling behind our budgeted amount.

Actual Received

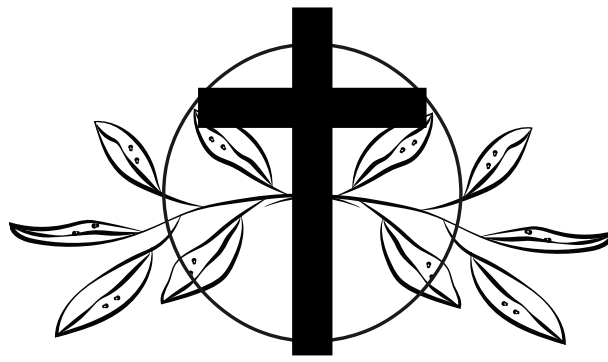
1/1/2021 - 1/31/2021

Pledges & General Fund: \$242,304

Church Ministry Plan

1/1/2021 - 1/31/2021

Pledges & General Fund: \$147,150



THE CROSS PROJECT

You have seen the teasers in the Weekly and other communications for weeks (“The Cross Project is coming...”). For those who want to know more about the ins and outs of this exciting Lenten endeavor...and for those who could use a little nudge of encouragement to dive in and get involved...we are am pleased to share everything you need to know about the Cross Project.

What is The Cross Project? We want you to build a cross. Something that reflects who you are, a special time in your life, a moment in your faith, or just something fun, beautiful, inspiring, interesting, and/or heartfelt. You can do this by yourself, as a family unit, or your Circle, Small Group or other group can do this.

Who should participate? You! Whether you are naturally artistic, creative as a hobbyist, or an absolutely clueless soul when it comes to anything artsy – make a decision to get involved in this congregational experience. Again, make your own cross as an individual, or work with a friend or family member.

How big should/can it be? What are the rules about materials? It can be a big or small as you choose. Some will be tabletop size; others will be freestanding. As long as we can fit it through the doors of the Sanctuary, or can find a temporary space in the Oasis Garden, your cross is the right size! As for materials, anything goes as well. Use things you already have around the house, or come and check out the inspiration station in Patten Hall – we have loads of crafting materials that you are welcome to take home for your cross. Try thinking outside the box. If you feel intimidated at the entire thought of making something, consider doing something small. Just do it!

Where do I bring my cross when it is finished? Any staff member will happily take your cross, and provide you with a postcard to fill out with your name and other relevant information about your cross. We want to know what inspired you, and what materials you used. It will only take a minute or two to sit down and fill out the card; the stories behind the crosses are an important part of the project, so please don’t skip that step! All cross projects should be brought to the church **by Wednesday, March 24.**

What will my cross be used for? From Palm Sunday, through Holy Week and on Easter Day, all of the crosses will adorn our Chancel and Oasis Garden. It will be an awesome expression of worship and a reflection of our church family – our spirit, our diversity, our faith -- in an absolutely concrete way.

What happens after Easter? You are free to take your cross home any time after Easter. Or if that doesn’t work for you, they will kept and displayed for a few weeks after, so you can collect your cross for two weeks after the project. Any crosses that remain unclaimed will be lovingly kept for future use at worship services.

What else do I need to know? If you finish your cross early, or have a special cross you want included, bring it anytime. The collection will grow each Sunday –The instructions are in the form of a bookmark – and we have extra bookmarks, we have plenty of them. Here is also a link . On the reverse side of the bookmark, there are Scripture passages listed that we hope you will read each week through Lent – for inspiration and reflection.

As you prepare to enter into the Lenten journey...keep your eyes on the Cross.

CALENDAR

SUNDAY, FEBRUARY 21

- 11:00 AM, Worship Service, Sanctuary/Livestream
- 5:30 PM, High School Youth Group, RM 412

MONDAY, FEBRUARY 22

- 11:00 AM, Vicar's Landing Bible Study, Vicar's Landing
- 1:30 PM, Men's Bible Study, RM 204
- 6:30 PM, Adult Children of Alcoholics, RM 202
- 7:00 PM, Its Come to This AA, RM 204

TUESDAY, FEBRUARY 23

- 9:30 AM, Ladies' Small Group (Nelson), RM 203
- 12:00 PM, Wonderful Wednesdays, RM 126
- 5:30 PM, Chancel Bell Rehearsal, Sanctuary
- 5:30 PM, The Universal Christ, RM 126
- 6:30 PM, Men's 40+ Basketball, Gym

WEDNESDAY, FEBRUARY 24

- 8:30 AM, Men's Bible Study, RM 126/Zoom
- 9:00AM, Strength & Balance Class/ Zoom
- 9:30 AM, Lectio Divina, RM 202/Zoom
- 4:00 PM, Middle School Youth Group, RM 412
- 4:15 PM, CAMP Choir, Sanctuary
- 7:00 PM, Men's Basketball, Gym

THURSDAY, FEBRUARY 25

- 1:00 PM, Prayer Shawl Ministry, RM 202
- 4:30 PM, Centering Prayer, RM 202/Zoom
- 7:30 PM, The Alcoholics Group-Men's AA (Patten Hall)

FRIDAY, FEBRUARY 26

- No events scheduled

SATURDAY, FEBRUARY 27

- No events scheduled

PRAYERS & CONCERNS AS OF FEBRUARY 18

AT HOME

Richard A., Linda C., Anne F., Wanda G., Jean H., Judy H.,
Faye L., Nelson M., Pam & Ray P., Connie P.,
Nancy R., Ted S., Sheila T., Malvina W.

ASSISTED LIVING

Sandra A., Nancy A., Jane D., Jane F., Jean F., Wanda Lee G.,
Betty Lu G., Anne H., Muriel J., Helen K., Joan K., Betty L., Henry L.,
Linda M., Frances M., Mary N., Barbara P., Don S.,
Sally T., Adair W., Dick W., Quentin W.

IN THE MILITARY

James McDuffie B., Woody C., Michael G., Zach J., Dr. Janet W.,
Andrew W., Daniel W., Janet W. and Dr. Austin Y.

GLOBAL MISSION

Richard and Ursula W., Affordable Medicines for All; Leon & Jacky D.,
and Nadege G., Haiti Outreach Ministries (HOM); Pastor Charles,
Zoe Church, Delft, South Africa

LOCAL MISSION

Lori R., BEAM; Curtis F., Beach Habitat for Humanity; LaToya T.,
The Carver Center; Latrenia T., The Gail Baker Center; Faculty and
Students of Finegan and Seabreeze Elementary Schools; Carina S.,
Mission House; Rick C., The Sanctuary on 8th Street; Lori A.,
Dial-A-Ride; Mary Jane B., Beaches Community Kitchen

PRAYER REQUESTS

Submit a prayer request by contacting Sallie Gipson at
sallie.gipson@palmschurch.org.

For privacy reasons, last names are removed when posting on the internet.



We are excited to introduce Realm to the Palms community of faith. Realm is a church management software that will be replacing CCB. Realm will enable us to connect more efficiently - whether it is face-to-face or online.

Here are a few frequently asked questions that may help you get set up in Realm:

1. You will need to reply to the link in your invitation email, or click on the disciple log in on the website to set up your account.
2. Follow the instructions on the screen - enter your email address, set up your password with at least 8 characters - and you will get verification email.
3. Click on the link in your verification email in order to finalize your Realm account setup and again, follow all of the instructions on the screen.

Watch the video to learn how to set up your new account.

(<https://www.youtube.com/watch?v=uJ5y1F-VIIQ&feature=youtu.be>)

For those who may have some technical difficulty with this process, the Connection Team is working to schedule Sunday morning workshops at 9:45am. These times and dates will be announced very soon. Face-to-face assistance, by appointment only, will also be available in the church office led by staff.

COVID-19 Guidelines

To help prevent the spread of COVID-19, everyone should :

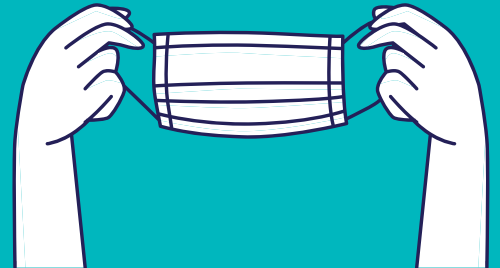
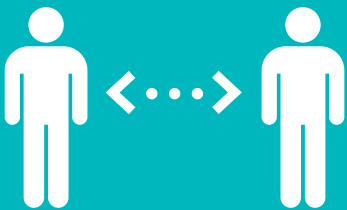
- Clean your hands often, with soap and water for 20 seconds or a hand sanitizer containing at least 60% alcohol.
- Avoid close contact with people who are sick.
- Put distance between yourself and other people (at least 6 feet).
- Cover your mouth and nose with a cloth face cover when around others.
- Cover your cough or sneeze with a tissue, then throw the tissue away.
- Clean and disinfect frequently touched objects and surfaces daily.
- CDC recommends people wear a cloth face covering in public settings.

The Holy Trinity of COVID-19:

Your patience, grace and forbearance are greatly appreciated as we strive to navigate these uncharted waters. None of us have had to make such radical mediations for in-person worship and group gatherings. While we are people of faith, not fear, there are sensible and reasonable precautions we can all maintain.

Please protect yourself and others during the pandemic from this inviable virus which lurks in such insidious ways.

1. Maintain a loving distance! Social distance no less than 6-feet apart.
2. Wash your hands often. Use sanitizer.
3. Wear a face covering. Mask/face shield.



#StopTheSpread

STAFF

Rev. Dr. Jeffrey Weenink, Interim Pastor
Rev. Dr. Laurie Furr-Vancini, Associate Pastor
Dr. Ronn Cummings, Director of Music & Fine Art
Lori Vaughn, Church Business Director
Kadesha Baker, Director of Palms Preschool & Childcare Center
Jimmy Steele, Youth Ministry Coordinator
Dana Riley, Coordinator of Connection Ministries
Bill Wildey, Older Adult Ministry Coordinator
Rev. Lloyd S. Alamsha, Parish Associate
Cathy Fortson, Organist

For a complete list of staff, visit palmschurch.org.

WAYS TO GIVE

**FOUR WAYS
TO GIVE
AT PALMS
PRESBYTERIAN**

	
ONLINE AT: PALMSCHURCH.ORG	TEXT TO GIVE TO: 73256
	
BY MAIL: 3410 THIRD ST. S. JAX BEACH, FL 32250	COLLECTION BOXES

- Give Electronically: Click the teal give button on the Palms home page, www.palmschurch.org.
- Text to Give: Send a text to 73256, and in the text message box write Palms \$ and the amount you wish to give. When you receive the link, click on the link and choose the fund you wish to have your gift given to.
- By Mail: Gifts may be mailed to the church office.
- Collection boxes are located by the main sanctuary double doors and in the back of the sanctuary on the left wall.